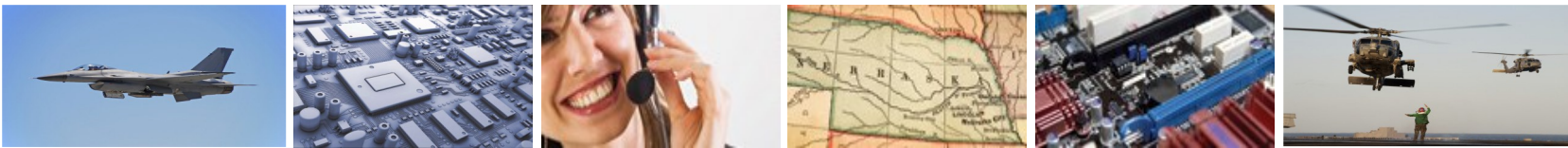


Quality  
ERAI Member  
RoHS Compliant  
Excellence  
Concord Components Inc.  
AS 9120:2009 Certified  
GIDEP Member  
BBB Accredited  
ANSI ESD S20.20-2014 Certified  
ISO 9001:2008 Certified  
Since 1995

**DEFINING EXCELLENCE** in Electronic Components Distribution



## Line Card

### About Us

Concord Components, Inc. is a trusted supply chain partner to major manufacturers and the U.S. Government, specializing in the distribution of military and commercial grade board level components. We stock a wide range of products including: Semiconductors, Connectors, Passive and Electro-Mechanical components. Concord Components, Inc. has 500,000 line items of **Obsolete and Hard to Find** parts in stock; making us a valuable partner in mitigating DMSMS and obsolescence issues.

### Market Position

- Over 500,000 Lines of Inventory
- Military & Commercial Grade Stock
- 60,000 SQ. FT. ESD S20.20-2014 Warehouse
- Provides Traceable Product
- BOM Fulfillment
- 20+ Years in Component Distribution
- Value Added Services

### Authorized Lines

3M Electrical Products, Diotec Semiconductor, Edison Opto USA, Kamaya, Walsin Technology, XTREME Semiconductor



### Supplier Quality Strategy

Starts with the procurement process where **90%** of the electronic components procured through Concord Components, Inc. are purchased from some of the worlds largest OEM & CEM's. Regardless of where the product originates, it must first pass a stringent quality inspection and testing process meeting our ISO9001:2008 & AS9120:2009 standards.

- Quality System Certified To **ISO9001:2008 & AS9120:2009**
- Facility Certified to ESD S20.20-2014
- In House Inspection and Testing Capabilities
- **Counterfeit Detection - Component Authentication Experts**
- Product Re-Certification Services
- Customer and Supplier Rating Programs
- **GIDEP** Member
- **ERAI** Member



10000570 QM08  
10000570 ASV09-1  
10000570 ES



ISO 9001 : 2008  
AS 9120 : 2009  
ESD S20.20-2014



**CONCORD COMPONENTS, INC.**

1700 Industrial Drive, Wayne, NE 68787  
Telephone (402) 375-5000 | Fax (402) 375-5004 | Toll-Free (800) 871-1749

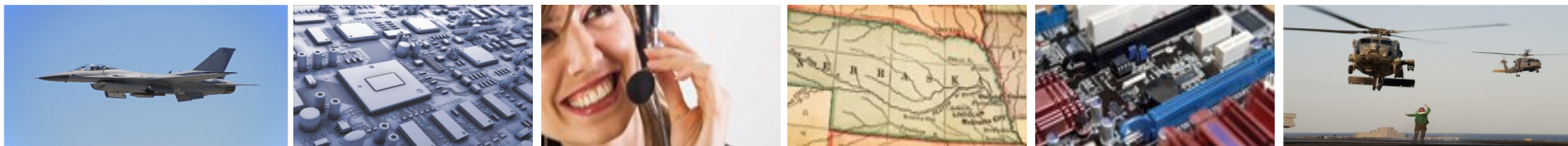
[www.ConcordComponents.com](http://www.ConcordComponents.com)

Quality  
ERA1 Member  
RoHS Compliant  
Excellence



AS 9120:2009 Certified  
GIDEP Member  
BBB Accredited  
ANSI ESD S20.20-2014 Certified  
ISO 9001:2008 Certified  
Since 1995

**DEFINING EXCELLENCE** in Electronic Components Distribution

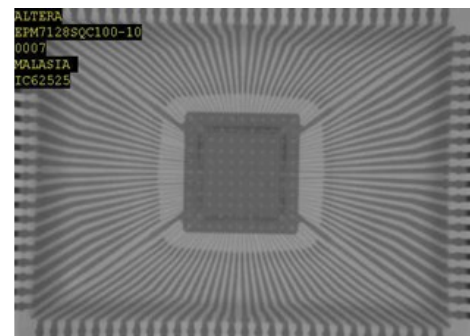
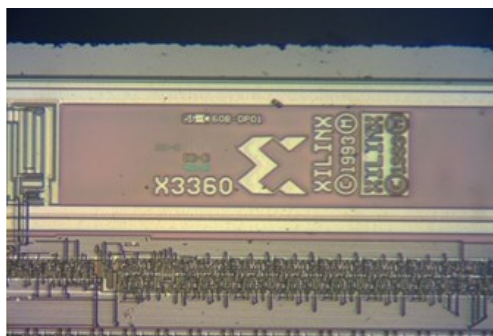


## Line Card

### Value Added Services

Concord Components, Inc. is a broad based supplier, which offers more than just distribution Services. We offer a basket of Value Added Services, which complement our sales offerings, and offer additional ways to increase cost savings and improve On Time Delivery:

- RFID Tagging
- Bar Coding
- Military Packaging
- Dry Packing
- Small Quantity Packaging
- Tape/Reeling
- Same Day Shipping
- Scheduled Shipping
- Drop Shipments
- Shipment Consolidation
- Blanket Orders
- Scheduled Orders
- Visual Inspections
- Die Inspections
- IC Testing
- Kitting Services
- Scrap Reclamation
- Excess Management Services



### Company Facts

**Main Facility (Bill To/Ship To):** Wayne, NE  
**Registrations:** CCR Registered  
**Information Sharing:** Exostar  
**Duns Number:** 839245552  
**Cage Code:** 1UHB2

NAICS Codes:	
423710	493190
423610	425120
423690	454113

### Contact Information

**Walka Ramos**  
 Sales Manager  
 T. (402) 375-5000 Ext. 102  
 F. (402) 375-5004  
[Walka@ConcordComponents.Com](mailto:Walka@ConcordComponents.Com)

**Cris Bathke**  
 Sales  
 T. (402) 375-5000 Ext. 115  
 F. (402) 375-5004  
[Cris@ConcordComponents.Com](mailto:Cris@ConcordComponents.Com)

**Shanda Geiser**  
 Sales  
 T. (402) 375-5000 Ext. 112  
 F. (402) 375-5004  
[Shanda@ConcordComponents.Com](mailto:Shanda@ConcordComponents.Com)